

## **APPENDIX**

### **FIRE INSURANCE MAP REVIEW**

## **FIRE INSURANCE MAP REVIEW**

Fire insurance maps are large-scale maps that depict the commercial, industrial and residential sections of some twelve thousand cities and towns in the United States. These specialized maps were first prepared for the exclusive use of fire insurance companies and underwriters to provide accurate, current and detailed information about the buildings they were insuring. Information relied upon in place of personal examinations of property. Fire insurance maps show the size, shape and construction of dwellings, commercial buildings and factories, as well as indicate widths and names of streets, property boundaries, and house and block numbers. The primary benefit of reviewing fire insurance maps is to analyze historical land use of a subject property and its immediate area. In this review, special emphasis is given to the existence and location of fuel storage tanks, flammable or other potentially hazardous substances, as well as the nature of businesses located on site.

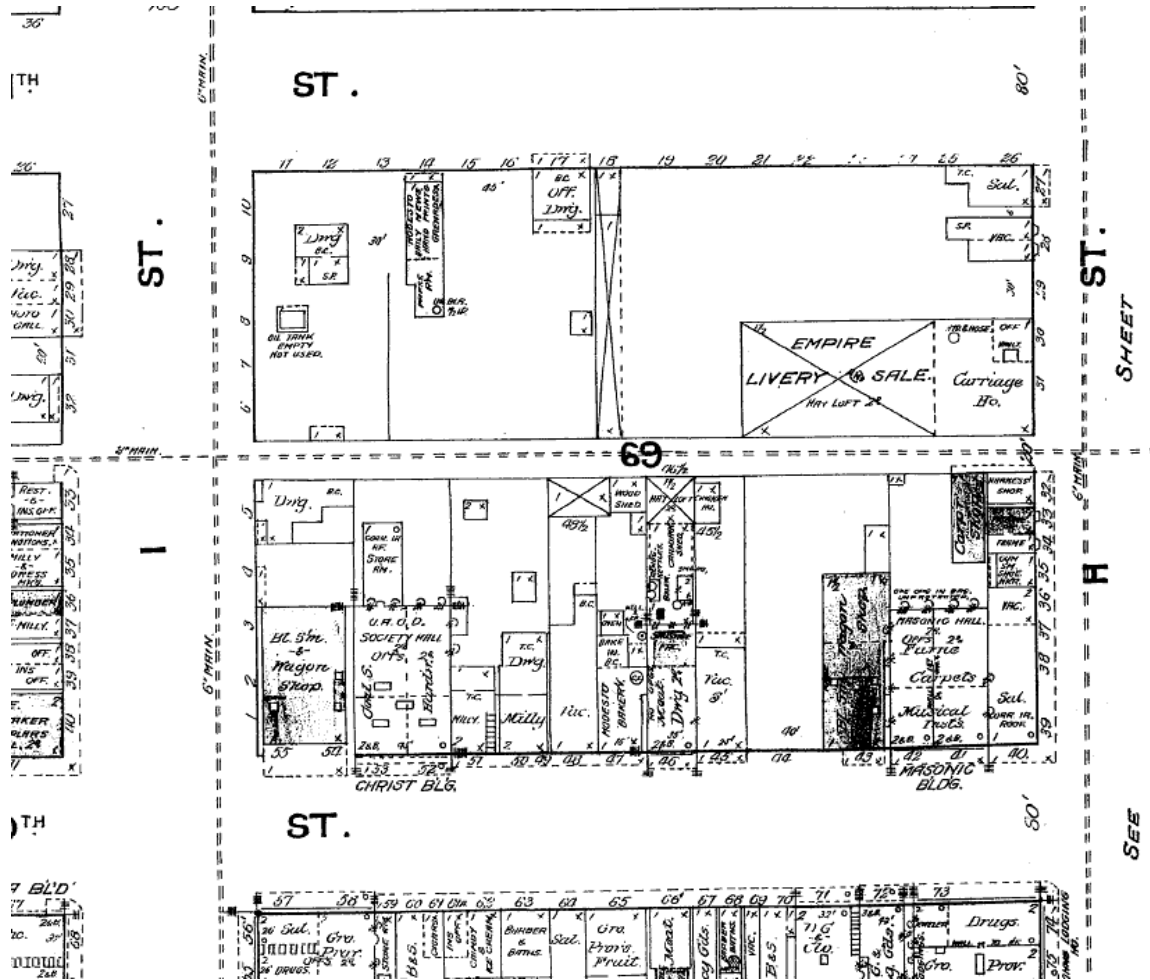
Fire insurance maps are large-scale maps that depict the commercial, industrial and residential sections of some twelve thousand cities and towns in the United States. These specialized maps were first prepared for the exclusive use of fire insurance companies and underwriters to provide accurate, current and detailed information about the buildings they were insuring. Information relied upon in place of personal examinations of property. Fire insurance maps show the size, shape and construction of dwellings, commercial buildings and factories, as well as indicate widths and names of streets, property boundaries, and house and block numbers. The primary benefit of reviewing fire insurance maps is to analyze historical land use of a subject property and its immediate area. In this review, special emphasis is given to the existence and location of fuel storage tanks, flammable or other potentially hazardous substances, as well as the nature of businesses located on site.

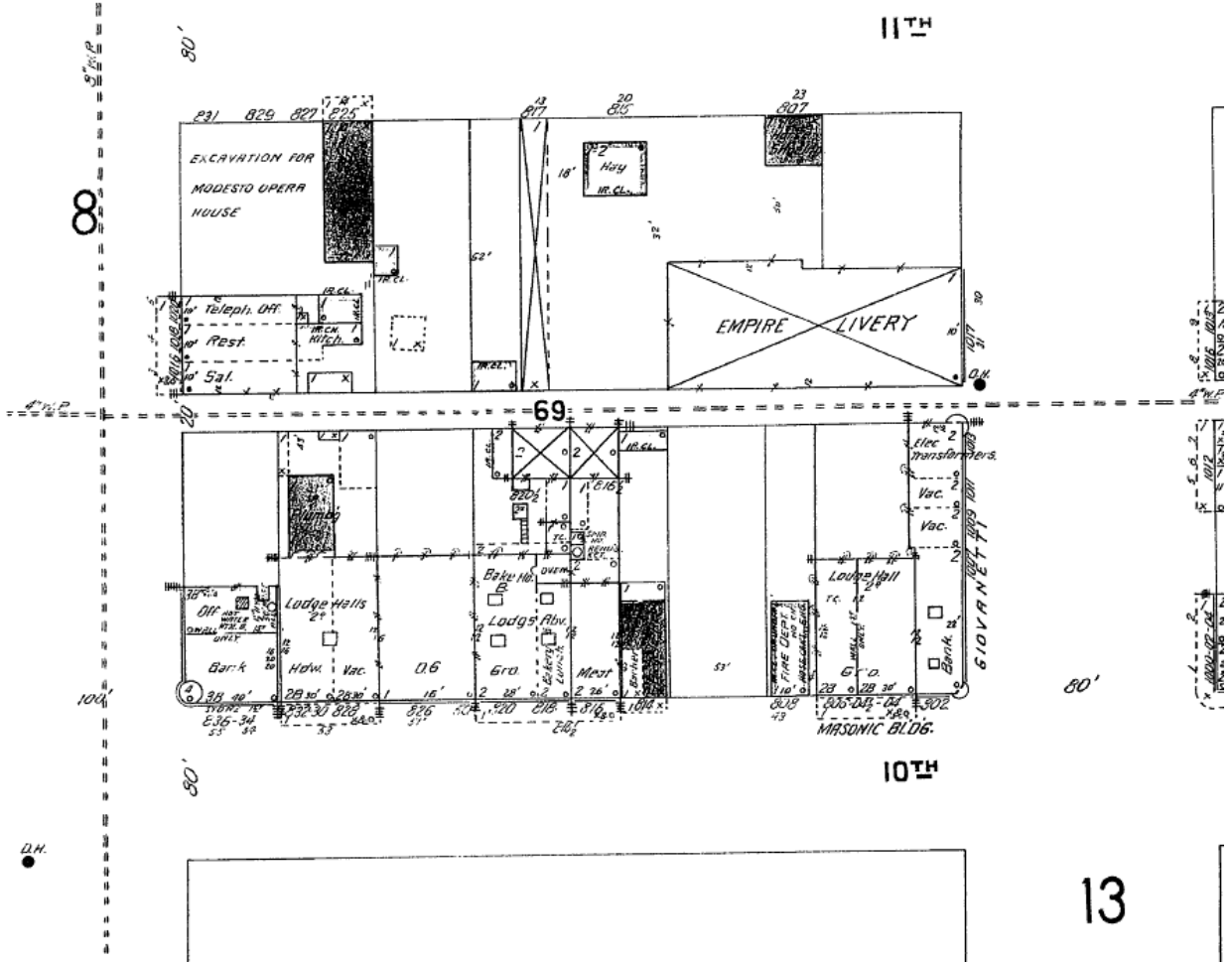
In 1950, that portion of the subject block along 11<sup>th</sup> St shown as the following: 809-809 ½ vacan, 811-813 three unspecified stores, 815-817 the Modesto Bee Office & Prntg, 819-821 stores, 823-827 Office Bldgs, and 831 Restaurant. That portion along 10<sup>th</sup> St swon as 802-808 two Stores, 810 Rest., 812-836 six Stores, 840 labeled D.G., 844 Store, and 850 Bank, Along H St; 1001-1007 Store, 1011 Rest., 1020-1026 three Stores.

In 1919, that portion along 11<sup>th</sup> St shown as; 801-809 the Modesto Hotel, 811-813 vacant, 817 Tire Store with Auto Service & Rep'g in the back, 819-821 Auto Store with Auto Rep'g in the back, 823 Office, 825 Print Shop, and 827-831 Grocery Store. Along 20<sup>th</sup> St; 802 Fruit Stand, 804 labeled G.F.G. with Lodging on the 2<sup>nd</sup> floor, 812-816 Variety Store, 818 Gas Office, 820 labeled Mill'y, 822-824 Drugstore, 826 Meat Shop, 832 Bakery, 834 Fruit Store, 836 Hardwood Store, 838-840 labeled D.G., 842-844 Rest., 846-848 Drug Store, 850 Bank. Along H St; 1009 Office, 1011 Cobbler, 1011 ½ Cigars, 1013 Barber, 1015 Print & Wallpaper, 1017, Grocery, 1019 Photo Shop, 1021 Tire Store, 1025 Barber, Along I St; 1004 Office, 1006 Tire Store, 1008 Office, 1010 Jeweler, 1012=1014 Mill'y, 1016 Printing, 1020 Office, and 1022 Stationary Store.

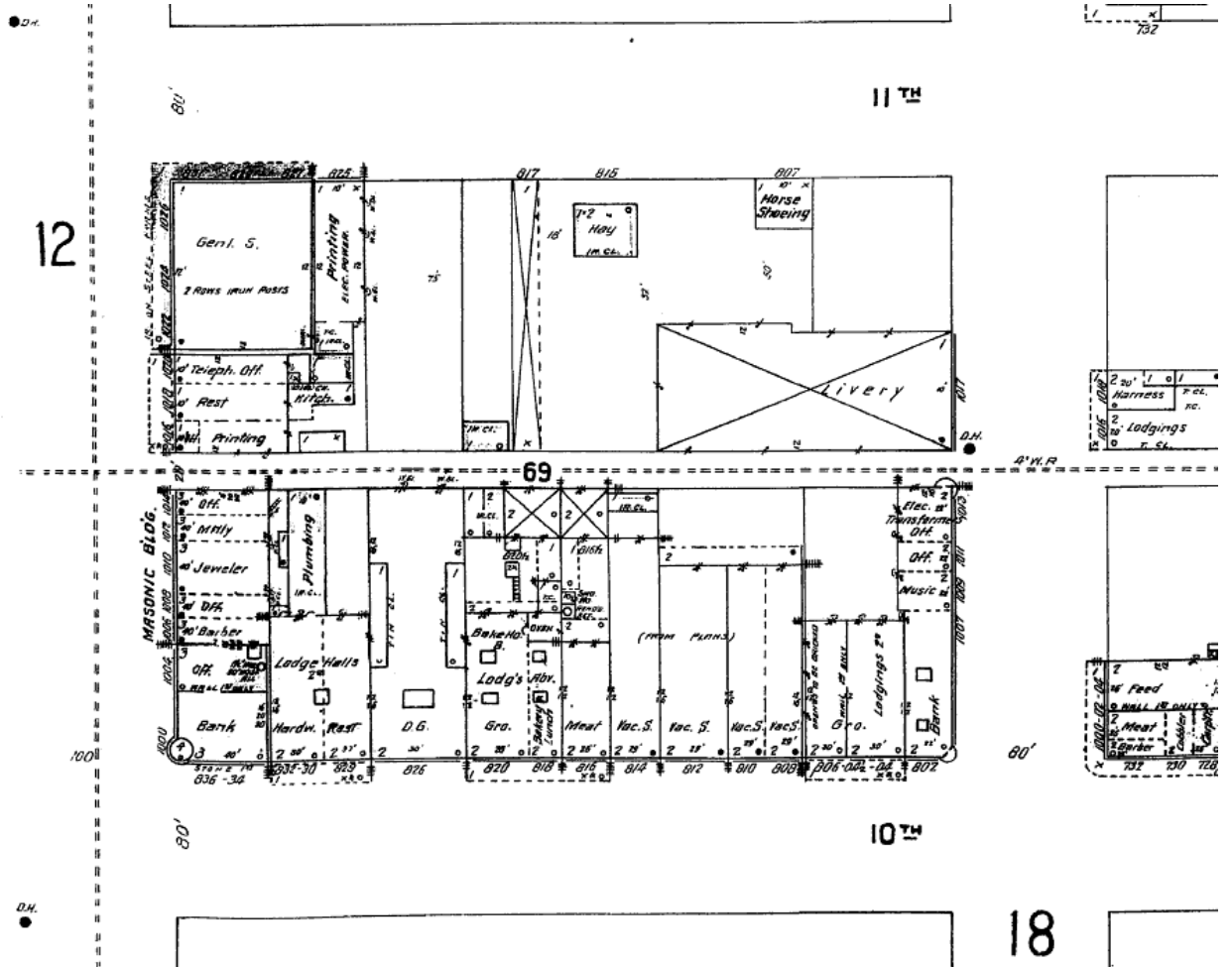
In 1907, that portion along 11<sup>th</sup> St shown as; 870 Horse Shoeing, 825 Office & Composing Room, Along 10<sup>th</sup> Sr; 802 Vacant, 804-806 Furniture Store, 814 Rest., 816 Meat, 818 Bakery, 820 Grocery 830 Hardwood Store, 832 Plumbing, and 834-838 Bank. Along H St; 1009 Vacant, and 1017 Empire Livery & Feed Stable. Along I St; 1024 Boot Maker.

In 1988, along 11<sup>th</sup> St; 819 Drugstore, 825 Printing,. Along 10<sup>th</sup> St; 804-806 Musical Instruments, 824 Drugstore, 832 Bakery, 840 Mill'y, 844 Hardwood, 848 Office, 850 Wagon Shop,. Along H St 1017 Carriage House & Livery. Along I St; 1020 Oil Tank Empty- Not Used

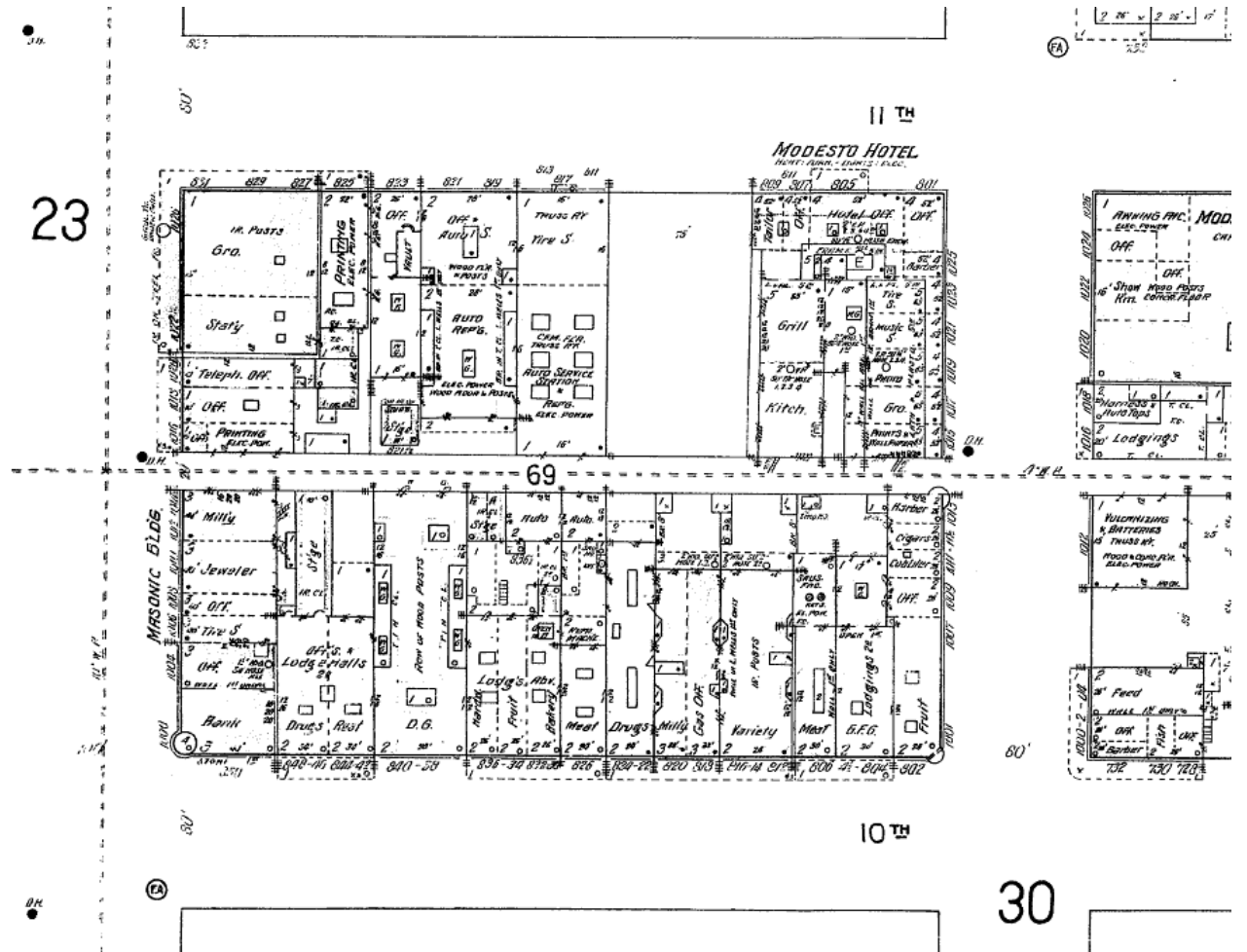




1907,



1911,



1919,